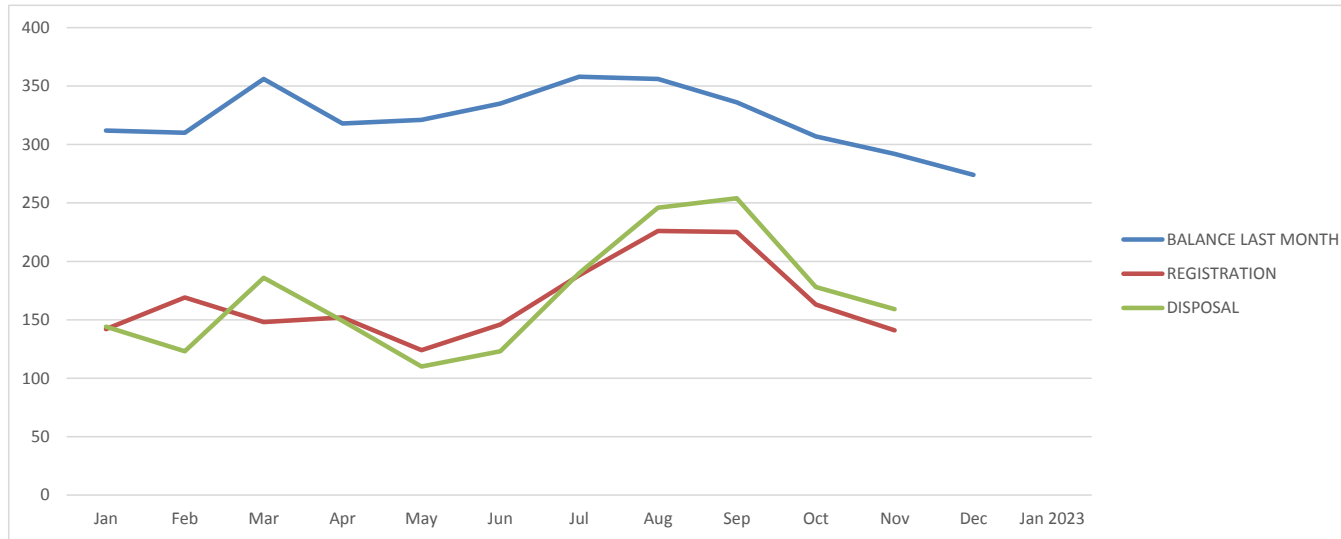




**TRACKING CHART**  
**MAGISTRATE COURT OF KANGAR**  
**JUDGE : PUAN ANA ROZANA BINTI MOHD NOR**  
**AS AT 30 NOVEMBER 2022**

**ANNEXURE MC (2)**  
**CRIMINAL CASES**  
**COURT : MAGISTRATE (2)**



MONTH	BALANCE LAST MONTH	REGISTRATION	DISPOSAL	PERCENTAGE OF DISPOSAL(%)
Jan	312	142	144	32%
Feb	310	169	123	26%
Mar	356	148	186	37%
Apr	318	152	149	32%
May	321	124	110	25%
Jun	335	146	123	26%
Jul	358	188	190	35%
Aug	356	226	246	42%
Sep	336	225	254	45%
Oct	307	163	178	38%
Nov	292	141	159	37%
Dec	274	141	159	37%
Jan 2023				#DIV/0!

Formula Pending Cases: Balance Last Month + Registration - Disposal

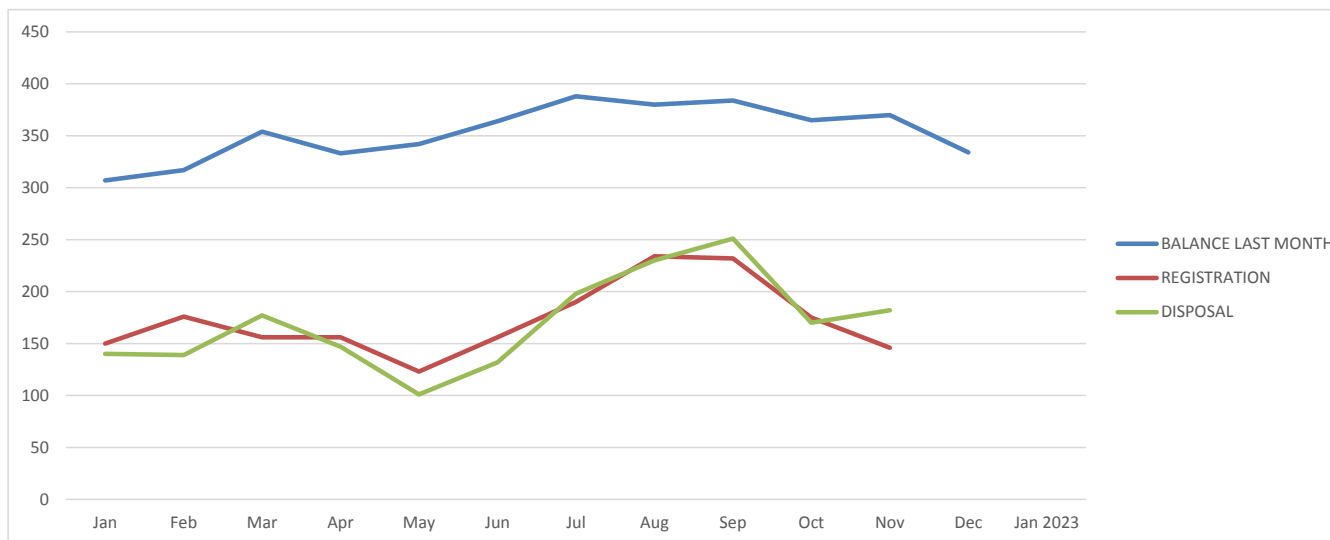
Formula Percentage of Disposal: Disposal / (Balance last Month + Registration) x 100

\*Exclude Codes 86 - 89



**TRACKING CHART**  
**MAGISTRATE COURT OF KANGAR**  
**JUDGE : PUAN SITI NOR HASLIZA BINTI MD ALI**  
**AS AT 30 NOVEMBER 2022**

**ANNEXURE MC (2)**  
**CRIMINAL CASES**  
**COURT : MAGISTRATE (1)**



MONTH	BALANCE LAST MONTH	REGISTRATION	DISPOSAL	PERCENTAGE OF DISPOSAL(%)
Jan	307	150	140	31%
Feb	317	176	139	28%
Mar	354	156	177	35%
Apr	333	156	147	30%
May	342	123	101	22%
Jun	364	156	132	25%
Jul	388	190	198	34%
Aug	380	234	230	37%
Sep	384	232	251	41%
Oct	365	* 175	170	31%
Nov	370	146	182	35%
Dec	334			
Jan 2023				#DIV/0!

**\* Daripada jumlah ini, 1 kes adalah Operasi Fail**

Formula Pending Cases: Balance Last Month + Registration - Disposal

Formula Percentage of Disposal: Disposal / (Balance last Month + Registration) x 100

**\*Exclude Codes 86 - 89**