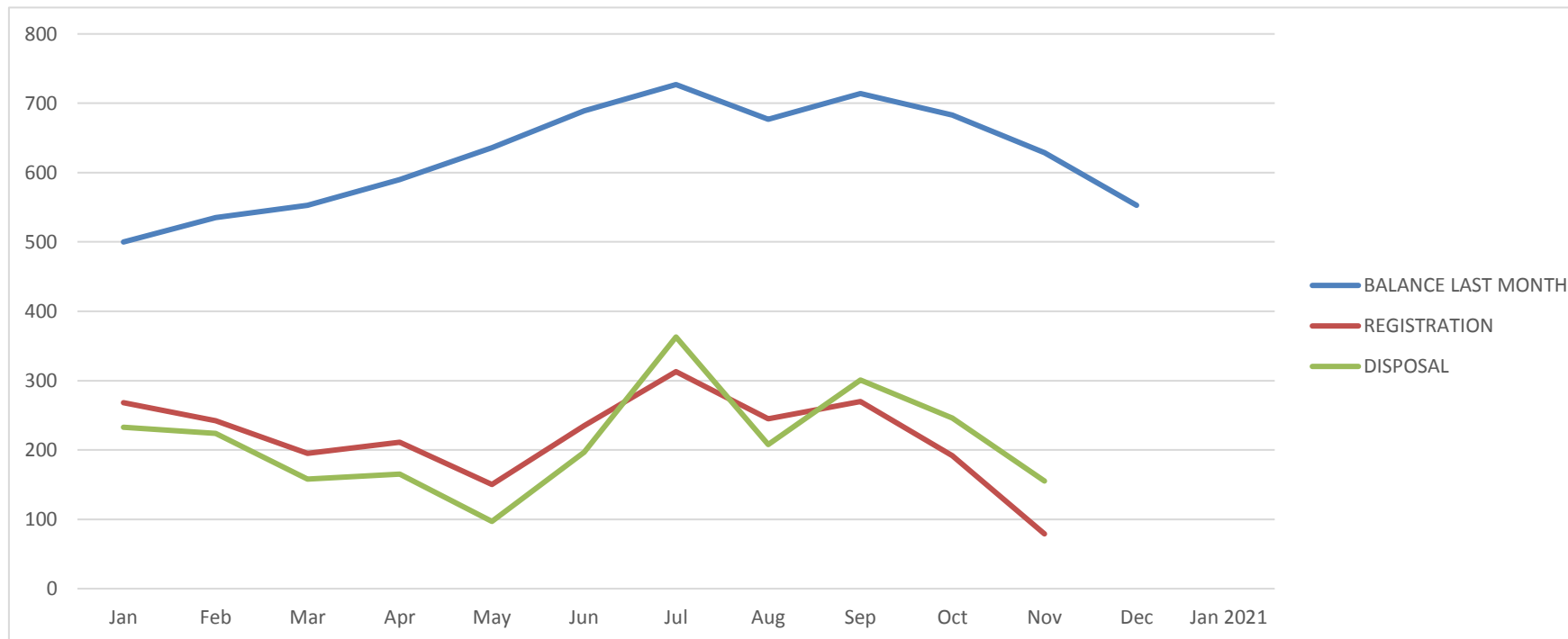




TRACKING CHART
MAGISTRATE COURT OF KANGAR
JUDGE : PUAN KAMALIZA BINTI MD ZAIN
AS AT 31 OKTOBER 2020

ANNEXURE MC (2)
CRIMINAL CASES
COURT : CRIMINAL MGT



MONTH	BALANCE LAST MONTH	REGISTRATION	DISPOSAL	PERCENTAGE OF DISPOSAL(%)
Jan	500	268	233	30%
Feb	535	242	224	29%
Mar	553	195	158	21%
Apr	590	211	165	21%
May	636	150	97	12%
Jun	689	235	197	21%
Jul	727	313	363	35%
Aug	677	245	208	23%
Sep	714	270	301	31%
Oct	683	192	246	28%
Nov	629	79	155	22%
Dec	553			
Jan 2021				#DIV/0!

Formula Pending Cases: Balance Last Month + Registration - Disposal
 Formula Percentage of Disposal: Disposal / (Balance last Month + Registration) x 100

***Exclude Codes 86 - 89**