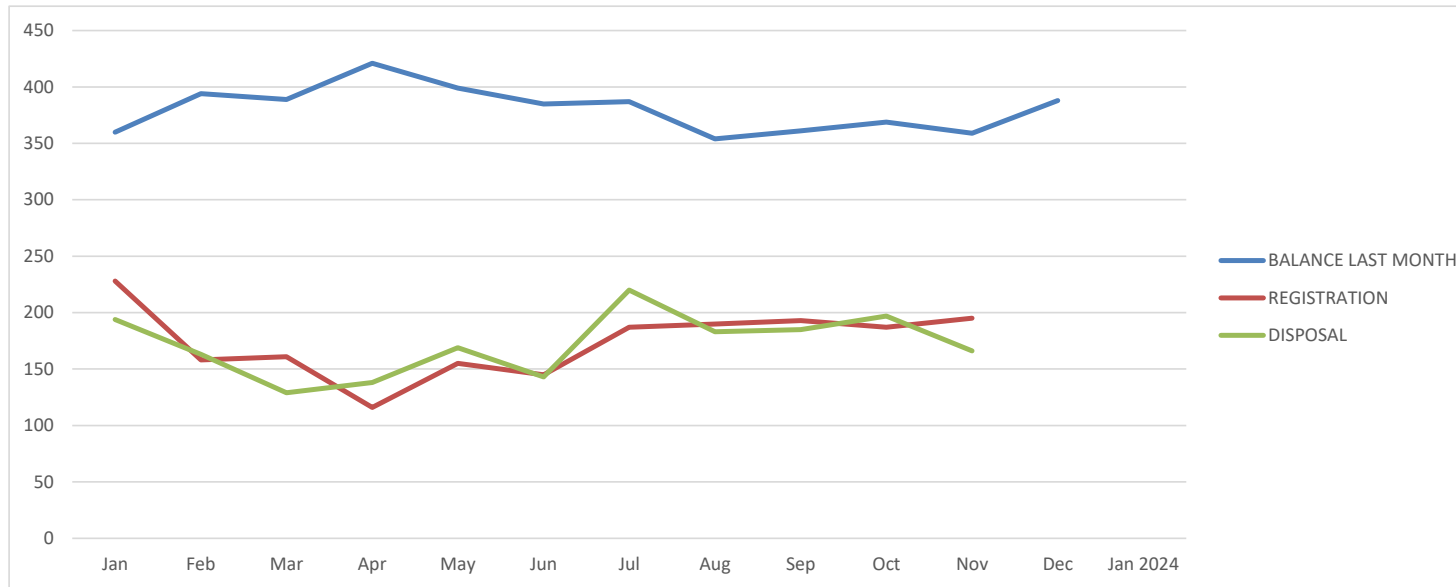




**TRACKING CHART**  
**MAGISTRATE COURT OF KANGAR**  
**JUDGE : PUAN NURSHAHIDA BINTI ABDUL RAHIM**  
**AS AT 30 NOVEMBER 2023**

**ANNEXURE MC (2)**  
**CRIMINAL CASES**  
**COURT : MAGISTRATE (1)**



MONTH	BALANCE LAST MONTH	REGISTRATION	DISPOSAL	PERCENTAGE OF DISPOSAL(%)
Jan	360	228	194	33%
Feb	394	158	163	30%
Mar	389	161	129	23%
Apr	421	116	138	26%
May	399	155	169	31%
Jun	385	145	143	27%
Jul	387	187	220	38%
Aug	354	190	183	34%
Sep	361	193	185	33%
Oct	369	187	197	35%
Nov	359	195	166	30%
Dec	388			
Jan 2024				#DIV/0!

Formula Pending Cases: Balance Last Month + Registration - Disposal

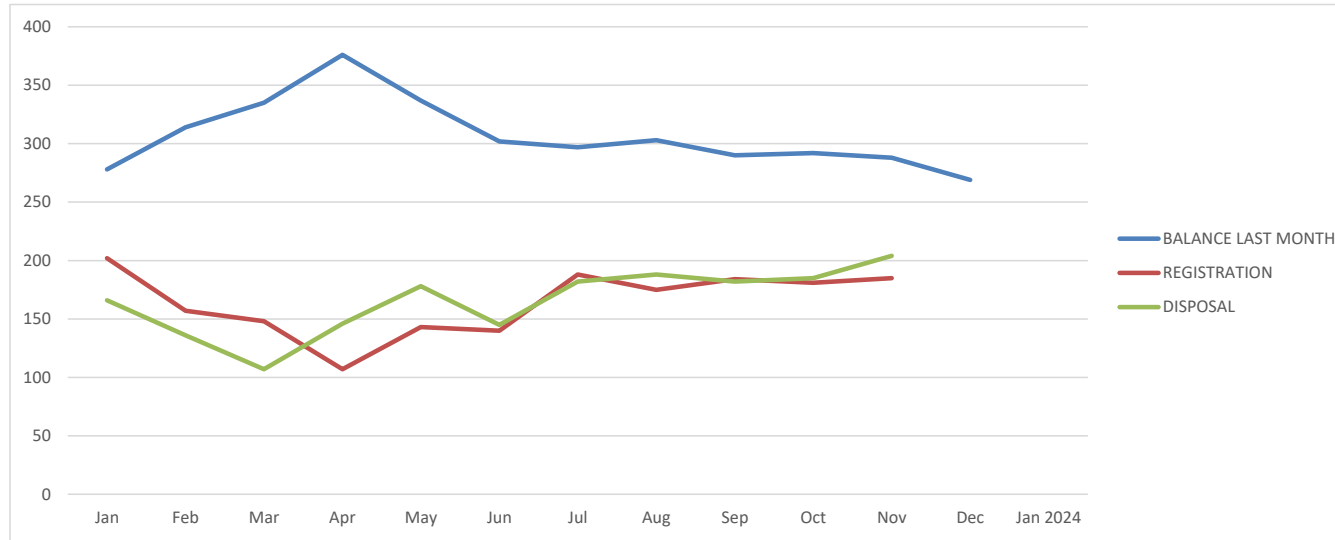
Formula Percentage of Disposal: Disposal / (Balance last Month + Registration) x 100

**\*Exclude Codes 86 - 89**



**TRACKING CHART**  
**MAGISTRATE COURT OF KANGAR**  
**JUDGE : PUAN ANA ROZANA BINTI MOHD NOR**  
**AS AT 30 NOVEMBER 2023**

**ANNEXURE MC (2)**  
**CRIMINAL CASES**  
**COURT : MAGISTRATE (2)**



MONTH	BALANCE LAST MONTH	REGISTRATION	DISPOSAL	PERCENTAGE OF DISPOSAL(%)
Jan	278	202	166	35%
Feb	314	157	136	29%
Mar	335	148	107	22%
Apr	376	107	146	30%
May	337	* 143	178	37%
Jun	302	140	145	33%
Jul	297	* 188	182	38%
Aug	303	* 175	188	39%
Sep	290	184	182	38%
Oct	292	181	185	39%
Nov	288	185	204	43%
Dec	269			
Jan 2024				#DIV/0!

Formula Pending Cases: Balance Last Month + Registration - Disposal

Formula Percentage of Disposal: Disposal / (Balance last Month + Registration) x 100

**\* 3 kes diremitkan ke Mahkamah Majistret untuk kes peringkat Pembelaan**

**\*Exclude Codes 86 - 89**