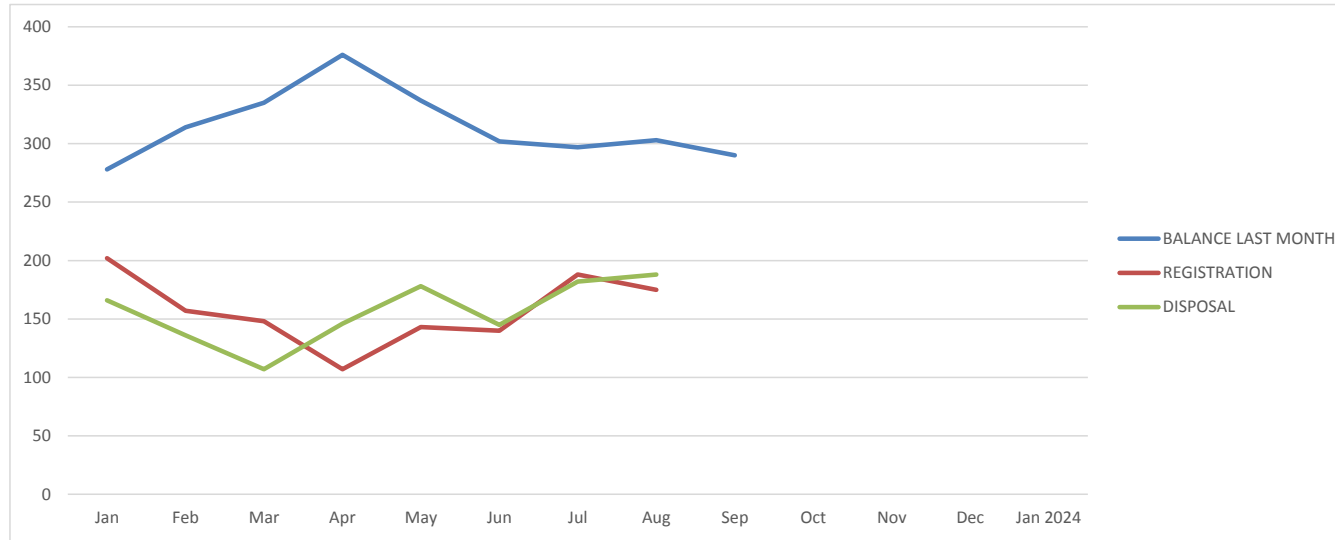




TRACKING CHART
MAGISTRATE COURT OF KANGAR
JUDGE : PUAN ANA ROZANA BINTI MOHD NOR
AS AT 31 AUGUST 2023

ANNEXURE MC (2)
CRIMINAL CASES
COURT : MAGISTRATE (2)



MONTH	BALANCE LAST MONTH	REGISTRATION	DISPOSAL	PERCENTAGE OF DISPOSAL(%)
Jan	278	202	166	35%
Feb	314	157	136	29%
Mar	335	148	107	22%
Apr	376	107	146	30%
May	337	* 143	178	37%
Jun	302	140	145	33%
Jul	297	* 188	182	38%
Aug	303	* 175	188	39%
Sep	290			
Oct				#DIV/0!
Nov				#DIV/0!
Dec				#DIV/0!
Jan 2024				#DIV/0!

Formula Pending Cases: Balance Last Month + Registration - Disposal

Formula Percentage of Disposal: Disposal / (Balance last Month + Registration) x 100

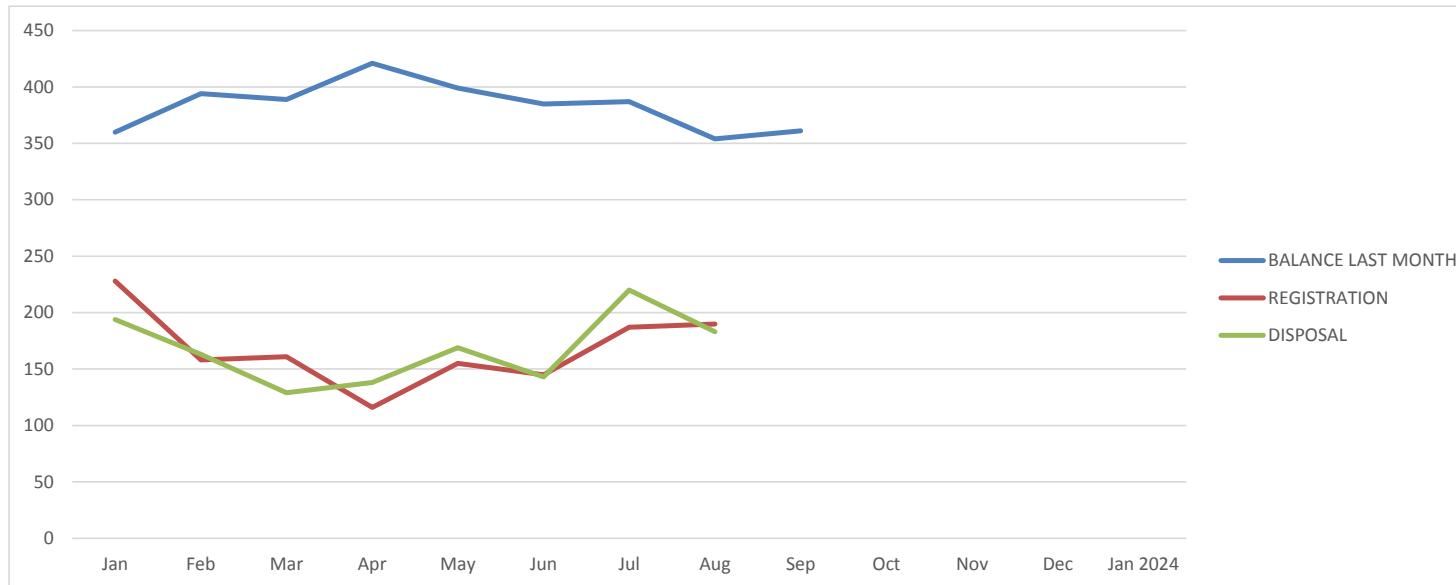
*** 3 kes diremitkan ke Mahkamah Majistret untuk kes peringkat Pembelaan**

***Exclude Codes 86 - 89**



TRACKING CHART
MAGISTRATE COURT OF KANGAR
JUDGE : PUAN SITI NOR HASLIZA BINTI MD ALI
AS AT 31 AUGUST 2023

ANNEXURE MC (2)
CRIMINAL CASES
COURT : MAGISTRATE (1)



MONTH	BALANCE LAST MONTH	REGISTRATION	DISPOSAL	PERCENTAGE OF DISPOSAL(%)
Jan	360	228	194	33%
Feb	394	158	163	30%
Mar	389	161	129	23%
Apr	421	116	138	26%
May	399	155	169	31%
Jun	385	145	143	27%
Jul	387	187	220	38%
Aug	354	190	183	34%
Sep	361			
Oct				#DIV/0!
Nov				#DIV/0!
Dec				#DIV/0!
Jan 2024				#DIV/0!

Formula Pending Cases: Balance Last Month + Registration - Disposal

Formula Percentage of Disposal: Disposal / (Balance last Month + Registration) x 100

***Exclude Codes 86 - 89**